

B R O O M F I E L D

800

Extra Heavy-Duty, High Torque, Coil Winding Machine

SPECIFICATIONS

The **Broomfield 800** winding machine has a four speed gearbox and allows for high torque winding of large, heavy coils. This model will pull multiple heavy conductors.

Features & Benefits:

- Three models available:
 - 800A:** Winding headstock
 - 800B:** Winding headstock with tailstock mounted on precision ways.
 - 800C:** Winding headstock, tailstock on precision ways and automatic wire traversing mechanism.
- Four speed ranges with variable speed within each range.
- Heavy-duty welded steel construction.
- Easily adaptable for winding single or multiple coils.
- Air and air/oil actuated disc brakes for positive stopping.
- Electronic wire guide traverse: Two precision layering styles are provided; Parallel and Spiral (800C).
- Setup time is minimized by use of electronic controls for setting wire pitch and stopping at the desired turns count (800C). The operator only needs to enter this data and to set the winding width stops. Winding speed ranges are easily selected.
- Reverse bend system eliminates the need for pounding wire or pressing coils into shape, produces tighter coils and uses less wire (800C).



B R O O M F I E L D

800

Extra Heavy-Duty, High Torque, Coil Winding Machine

Motor Equipment: 5HP (3.73kw), 10HP (7.46kw), or 25HP (18.65kw) motor with variable speed, foot controlled, vector drive.

Faceplate: 22" (560mm) diameter.

Spindle Speeds and Corresponding Torques 5HP:

0-5 rpm	5252 ft.-lbs.	(7121Nm)
0-8 rpm	3282 ft.-lbs.	(4450 Nm)
0-16 rpm	1641 ft.-lbs.	(2225Nm)
0-24 RPM	1094 ft.-lbs.	(1483Nm)

10HP:

0-10 rpm	5252 ft.-lbs.	(7121Nm)
0-16 rpm	3282 ft.-lbs.	(4450Nm)
0-32 rpm	1641 ft.-lbs.	(2225Nm)
0-48 rpm	1094 ft.-lbs.	(1483Nm)

25HP:

0-25 rpm	5252 ft.-lbs.	(7121Nm)
0-40 rpm	3282 ft.-lbs.	(4450Nm)
0-80 rpm	1641 ft.-lbs.	(2225Nm)
0-120 rpm	1094 ft.-lbs.	(1483Nm)

Power Requirement: Electrical: 5HP: 220V, three phase, 40amps.

10HP: 460V, three phase, 20 amps

25HP: 460V, three phase, 40 amps.

Other voltages available.

Air: 80 PSI (5.5 bar) at minimal CFM

Spindle Rotation: Either direction can be selected by a switch on the control panel.

Spindle Center Height: 49.5" (1257mm) from the floor.

P.O. BOX 157
113 STILL RIVER ROAD
BOLTON, MA 01740-0157 USA
P: 1-978-779-6600
F: 1-978-779-2954
E: info@broomfieldusa.com

WWW.BROOMFIELDUSA.COM

Brake: Electromagnetic spring set disc brake (for 5HP) or air actuated disc brake (above 5HP) operated by removing foot from variable speed control, by total turns counter or by emergency stop button.

Spindle Brake: Air/hydraulic actuated caliper on 28" (711mm) disc on the output spindle.

Tailstock: Mounted on precision ways to allow positioning anywhere along winding axis. 4" (102mm) quill travel. 60° live center in #5 or #6 morse taper.

Maximum Distance Between Centers:

800B & 800C: 65" (1651mm)

Maximum Swing Diameter: 800A: 98" (2489mm)

800B & C: 74" (1880mm)

Maximum Weight Capacity:

30,000 lbs. (13,636Kg) between centers.

5,000 lbs. (2273Kg) cantilevered

48" (1219mm) from the spindle.

Machine Control: A & B Models: Programmable Electronic Counter.

C Model: S-50 winding controller with 50 programmable stops, 7 program capacity, parallel and spiral layering and end stops to define winding width. (See S-50 page for details)

Weight:

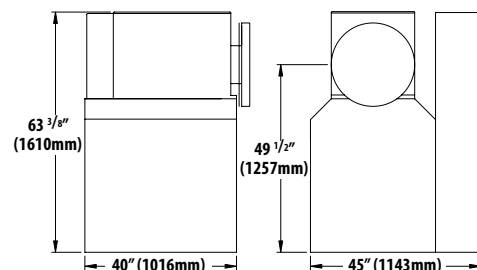
800A: 4800 lbs. (2182Kg), **800B:** 6600 lbs. (3000Kg)

800C: 18000 lbs. (8182Kg)

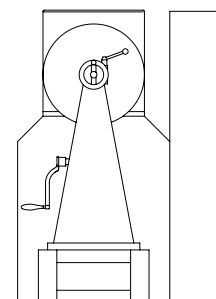
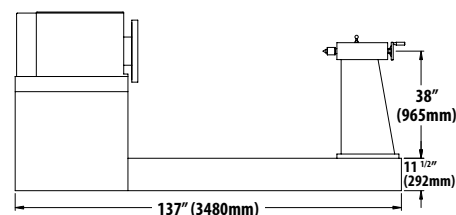
Options:

- Broomfield MP4 Controller automatically coordinates winding functions and provides for program storage.
- Multiwire guide assembly.
- Pulleys for square and rectangular wire.
- Automatic Run.
- Machine length according to your needs.
- Winding area safety devices.
- Paper insulation dereeler/tensioners.
- Multiple coil winding.
- Custom modifications for special applications.

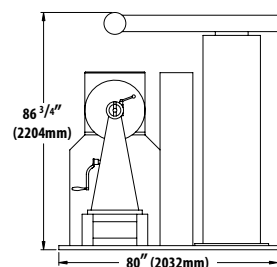
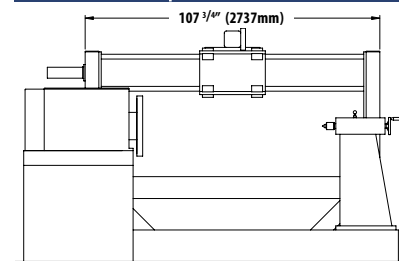
800A Model



800B Model



800C Model



BROOMFIELD