

B R O O M F I E L D

600

# Multi-Speed, Heavy-Duty High Torque Coil Winder

## SPECIFICATIONS

The **Broomfield 600** coil winding machines provide four speeds and torque ranges. This model is very popular for manufacturing distribution transformer coils because of its heavy duty design and versatility.

### Features & Benefits:

- Three models available:
- **600A:** Winding headstock.
- **600B:** Winding headstock with tailstock mounted on precision ways.
- **600C:** Winding headstock, tailstock on precision ways and automatic wire guide traversing mechanism.
- Four speed ranges with variable speed within each range. Maximum speed 388 RPM.
- Heavy-duty welded steel construction.
- Electrically actuated disc brake for positive stopping (5hp).
- Electronic wire guide traverse: Two precision layering styles are provided; Parallel and Spiral (600C).
- Setup time is minimized by use of electronic controls for setting wire pitch and stopping at the desired turns count (600C). The operator only needs to enter this data and to set the winding width stops. Winding speed ranges are easily selected.
- Reverse bend system eliminates the need for pounding wire or pressing coils into shape, produces tighter coils and uses less wire (600C).
- Easily adaptable for winding single or multiple coils.



B R O O M F I E L D

600

# Multi-Speed, Heavy-Duty High Torque Coil Winder

**Motor Equipment:** 5HP (3.73Kw) or 10HP (7.46Kw) AC motor with variable speed, foot controlled, vector drive.

**Faceplate:** 14" (356mm) diameter

**Primary Reduction:** Belt and pulley.

**Secondary Reduction:** Four speed gearbox.

## Spindle Speeds and Corresponding Torques

### 5HP:

0-29 rpm	905 ft.-lbs.	(1227Nm)
0-77 rpm	341 ft.-lbs.	(462Nm)
0-146 rpm	180 ft.-lbs.	(244Nm)
0-388 rpm	68 ft.-lbs.	(92Nm)

### 10HP:

0-29 rpm	1810 ft.-lbs.	(2454Nm)
0-77 rpm	682 ft.-lbs.	(925Nm)
0-146 rpm	360 ft.-lbs.	(488Nm)
0-388 rpm	136 ft.-lbs.	(184Nm)

**Power Requirement: Electrical:** 5HP: 220V, three phase, 40 amps.

10HP: 440V, three phase, 20 amps.

Other voltages available.

**Air:** 80 PSI (5.5 bar) at minimal CFM (10hp).

**Spindle Rotation:** Either direction can be selected by a switch on the control panel.

**Spindle Center Height:** 43" (1092mm) from the floor.

P.O. BOX 157  
113 STILL RIVER ROAD  
BOLTON, MA 01740-0157 USA  
P: 1-978-779-6600  
F: 1-978-779-2954  
E: info@broomfieldusa.com

WWW.BROOMFIELDUSA.COM

**Brake:** 5HP: Electro-magnetic spring set disc brake.

10HP: Air actuated disc brake.

Both operated by removing foot from variable speed control, by total turns counter or by emergency stop button.

**Tailstock:** Mounted on precision ways to allow positioning anywhere along the winding axis. 4" (102mm) quill travel. 60° live center in No. 4 Morse Taper.

## Maximum Distance Between Centers:

**600B and 600C:** 42" (1066mm)

**Maximum Swing Diameter: 600A:** 83" (2107mm)

**600B:** 63" (1599mm)

**600C:** 34" (863mm)

## Machine Control:

**A & B Models:** Programmable Electronic Counter.

**C Model:** S-50 winding controller with 50 programmable stops, 7 program capacity, parallel and spiral layering and end stops to define winding width.

**Weight: 600A:** 2500 Lbs. (1136Kg)

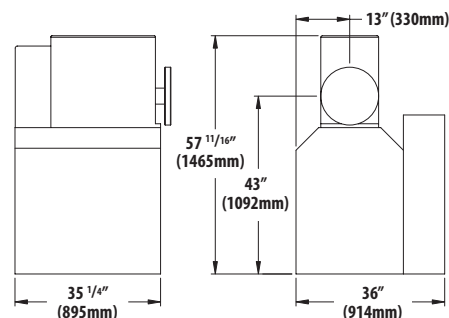
**600B:** 3500 Lbs. (1591Kg)

**600C:** 4900 Lbs. (2227Kg)

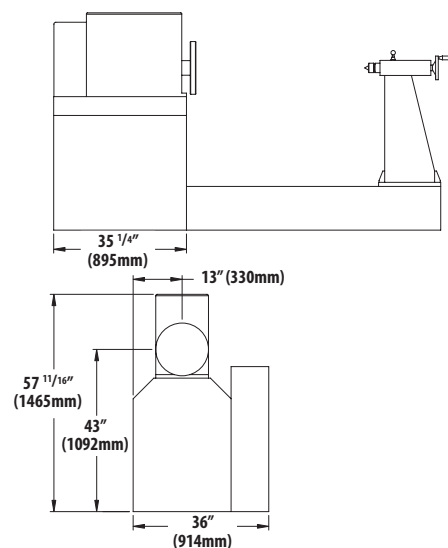
## Options:

- Broomfield MP4 Controller automatically coordinates winding functions and provides for program storage.
- Multiwire guide assembly.
- Pulleys for square and rectangular wire.
- Automatic Run.
- Longer or shorter machine length.
- 15 HP (11.2Kw) spindle motor and high torque gearbox.
- Heavy-duty tailstock.
- Winding area guard.
- Paper insulation dereeler/tensioners.
- Multiple coil winding.
- Custom modifications for special applications.

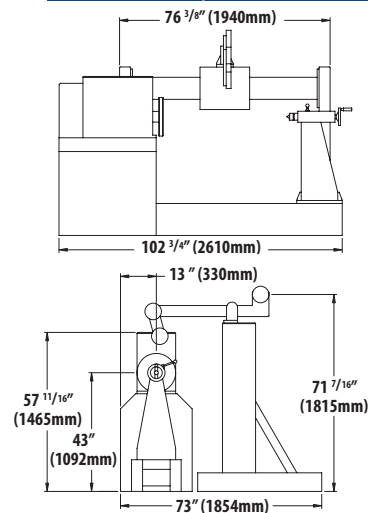
## 600A Model



## 600B Model



## 600C Model



**BROOMFIELD**