

B R O O M F I E L D

900

# Extra Heavy-Duty, Very High Torque Coil Winder

## SPECIFICATIONS

The **Broomfield 900** coil winder is a single speed, machine that can handle large, heavy coils and can provide very high winding torque. Our most powerful single speed winder, it can be manufactured with various speeds and torques according to your application requirements.

### Features & Benefits:

- Three standard models available:
  - 900A:** Winder headstock.
  - 900B:** Winder headstock with tailstock mounted on precision ways.
  - 900C:** Winder headstock, tailstock on precision ways and automatic wire guide traversing mechanism.
- Single speed range with variable speed.
- Heavy-duty welded steel construction.
- Air actuated disc brake for positive stopping.
- Electronic wire guide traverse: Two precision layering styles are provided; Parallel and Spiral (900C).
- Setup time is minimized by the use of electronic controls for precisely setting wire pitch and stopping at the desired turns count (900C). The operator only needs to enter this data and set the winding width stops.
- Reverse bend system eliminates the need for pounding wire or pressing coils into shape, produces tighter coils and uses less wire. (900C)
- Easily adaptable for winding single or multiple coils.



B R O O M F I E L D

900

# Extra Heavy-Duty, Very High Torque Coil Winder

**Motor Equipment:** 15HP (11.19Kw) - 75HP (55.95Kw) AC motor with foot controlled, variable speed vector drive.

**Faceplate:** 22" (558mm) diameter.

**Primary Reduction:** Belt and pulley.

**Secondary Reduction:** Gear reducer.

**Spindle Speeds:** Per Application

**Maximum Torque:** 15,000 ft.-lbs. (20,340Nm)

**Power Requirement: Electrical:** Various horsepower and three phase voltages available, depending upon application.

**Air:** 80 PSI (5.5 bars) at minimal CFM.

**Spindle Rotation:** Either direction can be selected by a switch on the control panel.

**Spindle Center Height:** 49.5" (1257mm) from the floor.

**Brake:** Air actuated disc brake on the spindle motor and air/oil hydraulic disc brake on the faceplate operated by removing foot from variable speed control, by total turns counter or by emergency stop button.

**Tailstock:** Mounted on precision ways to allow positioning anywhere along winding axis. 4" (102mm) quill travel. Heavy duty frame and quill. 60° live center in #5 or #6 morse taper.

**Maximum Distance Between Centers:**

**900B and 900C:** 65" (1651mm)

**Maximum Weight Capacity:**

Dependss on machine configuration.

**Maximum Swing Diameter: 900A:** 98" (2489mm)

**900B & 900C:** 74" (1880mm)

**Machine Control: A & B Models:** Programmable electronic counter.

**C Model:** S-50 winding controller with 50 program-able stops, 7 program capacity, parallel and spiral layering and end stops to define winding width. (See S-50 page for details)

**Weight:**

900A: 6500 lbs. (2954 Kg)

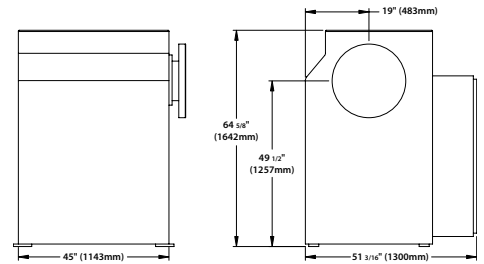
900B: 8300 lbs. (3772 Kg)

900C: 19,700 lbs. (8995 Kg)

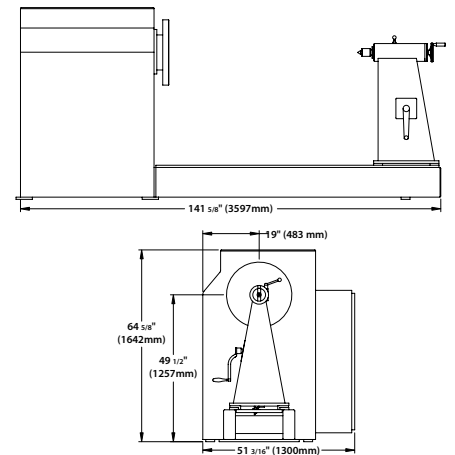
**Options:**

- Broomfield MP4 Controller automatically coordinates winding functions and provides for program storage.
- Multiwire guide assembly.
- Pulleys for square and rectangular wire.
- Automatic Run.
- Longer machine length.
- Larger swing diameter.
- Winding area safety devices.
- Paper insulation dereeler/tensioners.
- Multiple coil winding.
- Custom modifications for special applications.

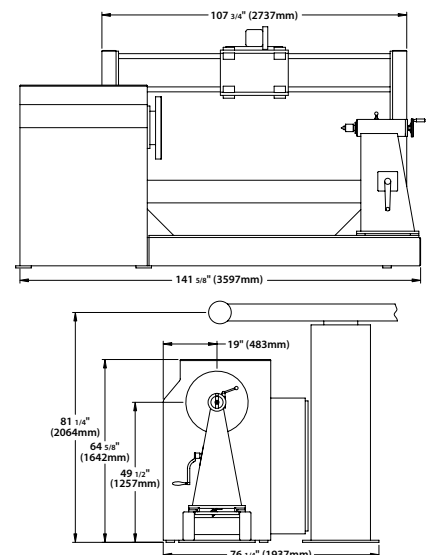
## 900A Model



## 900B Model



## 900C Model



P.O. BOX 157  
113 STILL RIVER ROAD  
BOLTON, MA 01740-0157 USA  
P: 1-978-779-6600  
F: 1-978-779-2954  
E: info@broomfieldusa.com

WWW.BROOMFIELDUSA.COM

**BROOMFIELD**